
  
Northwest Imaging Forums, Inc.  
P.O. Box 25909  
Eugene, OR 97402

# CT Registry and Advanced Protocols

Offers up to 24 Hours of Category A CE Technologist Credit

**October 17 -19, 2016**

Luxor Hotel and Casino  
Las Vegas, NV

  
Northwest  
Imaging Forums, Inc.

Register on line at: [www.nwforums.com](http://www.nwforums.com)

*Note: If you cannot attend, please pass this brochure to an interested colleague*

# CT Registry and Advanced Protocols

- Historical Development of Computed Tomography
- Computed Tomography Generations
- Characteristics of X-radiation
- Definition of CT Terms
- CT Scanner Components and Operations
- Digital Imaging
- Computed Tomography Process
- Pulmonary Embolism: CT Practice Essentials
- CT Contrast: When, Where, Why and How
- Data acquisition process
- Image display, manipulation
- Image Quality in CT
- Radiation Protection Practices for the CT
- Spiral and Multi-slice CT
- Recording and Archiving
- Patient Care
- Imaging Procedures
- CT Trauma
- CT Brain: Anatomy and Stroke Protocol Essentials
- CT Dose: How it is measured and what can we do to reduce dose

Offers up to 24 hours of Category A CE Technologist Credit

**October 17 - 19, 2016**

**LUXOR**

HOTEL & CASINO LAS VEGAS

Presented by:

**Northwest Imaging Forums, Inc.**

## Educational Objectives & Course Description

This course provides the student with broad fundamental knowledge about underlying principles, the equipment, associated terminology, and a description of important image properties of computed tomography scanning. The study of the operation of the CT scanner components, computer components, scanning factors, and the applications of these factors to clinical procedures will be explored. Evaluation of CT image quality, identification of artifacts, artifact reduction, quality control, radiation dose, and dose reduction will be addressed. The course will present basic applications and procedures exercised for computed tomography examination of the head, neck, thorax, abdomen, pelvis, spine, and the musculoskeletal system as well as basic anatomy for CT scanning. Patient care, venipuncture techniques, aseptic technique, contrast media, contrast media reactions, special procedures, and pediatric considerations will be explored. Scanning acquisition methods inclusive of helical/spiral, high resolution, conventional, electron beam scanning and multi-slice will be examined. Radiation safety and drug pharmacology relevant to computed tomography will be discussed.

## Accreditation & Verification of Attendance

The CT program has been submitted for approval of **24 hours of category A CE** technologist credit. To receive the maximum amount of credit hours, you must attend all the sessions. Guidelines approved by the SMRT verifying attendance for each lecture will be followed and a certificate of attendance will be issued to each qualified attendee by Northwest Imaging Forums, Inc. and mailed after the course.

## LUXOR Hotel and Casino

### LUXOR Hotel and Casino / [www.LUXOR.com](http://www.LUXOR.com)

We will meet in the fabulous LUXOR Hotel & Casino, the thirty story glass "Pyramid" on the famous Las Vegas strip. Located just 2.5 miles from McCarran International Airport, this elegant, 4,300 room hotel is the perfect setting for both business and pleasure. With eight restaurants, showroom entertainment, a 120,000 square foot casino and many attractions such as The Titanic Show & Museum, there is much to see and do. Across the street are the spectacular MGM Grand and Excalibur Hotels, offering yet more entertainment and fun. Las Vegas offers all its visitors unparalleled 24 hour excitement. There is truly something for everyone in this city of lights, glamour and fun. Parking at the hotel is free.

**Room Reservations:** We have been given special reduced sleeping room rates at the Luxor Hotel and Casino of \$52 per night plus tax and resort fees during dates of conference. You should contact the LUXOR Hotel by dialing toll free 800-926-4737 or 702-262-4450 and refer to Group Code: **NW1016P**. We urge you to make reservations by phone or on the web at [www.LUXOR.com](http://www.LUXOR.com), at your earliest convenience. You may reserve your room using the following direct link:

<https://resweb.passkey.com/go/NW1016P>

**Cutoff Date is: Friday September 23<sup>rd</sup>, 2016**

**IMPORTANT LUXOR NOTE:** The meeting will be held in the (Main Ballroom), which is located in the West Tower. When reserving a Luxor sleeping room, please consider requesting to be placed in the West Tower.

**Need more information about Las Vegas ?** [www.visitlasvegas.com](http://www.visitlasvegas.com)

**On-Demand  
Enduring Education  
Available at  
[www.Advancedcme.com](http://www.Advancedcme.com)  
[www.Nwforums.com](http://www.Nwforums.com)**



## Conference Faculty

### Featured Speakers

**Wil Reddinger, M.S.,R.T.(R)(CT)**  
 Program Director  
 Radiography, CT and MRI  
 Southwest University  
 El Paso, Texas

## Registration Fee Options

### Please Note:

Early Fee: Payment received on or through 10/01/16  
 Standard Fee: Payment received after 10/01/16 through 10/07/16  
 Late Fee: Payment received on or after 10/08/16

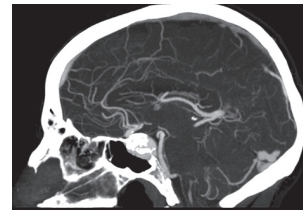
All Attendees	Full Conference		
	Early	Standard	Late
	\$545	\$565	\$585

## Program Format (24 hours Cat A CE Credit)

NOTE - Unless otherwise noted, presentation will be given by Wil Reddinger

### Monday 10/17 (8.0 hours)

- 7:45 Registration Desk Opens - Coffee, Tea & Pastries
- 8:15 Opening Announcements - Matt Wilson
- 8:30 Characteristics of X-radiation
- 9:20 Historical development of CT / CT Generations
- 10:10 Coffee Break
- 10:20 CT Terminology, Scanner Components and Operation
- 11:10 Digital Imaging and Computed Tomography Process
- 12:00 Lunch on Your Own
- 1:30 Data Acquisition, Scan Parameters/Factors
- 2:20 Image Display and Manipulation
- 3:10 Coffee Break
- 3:20 CT Image Quality Control
- 4:10 CT Quality Control and Physicists Measurements
- 5:00 End of Day



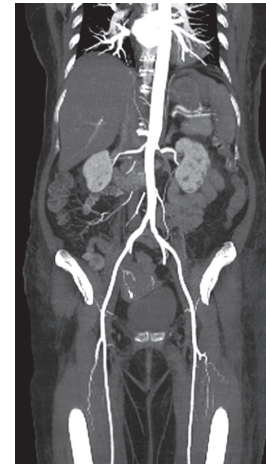
### Tuesday 10/18 (8.0 hours)

- 7:45 Registration Desk Opens - Coffee, Tea & Pastries
- 8:15 Announcements - Matt Wilson
- 8:30 Radiation Protection Practices for CT
- 9:20 Spiral and Multi-Slice CT
- 10:10 Coffee Break
- 10:20 Patient Care, Venipuncture and CT Contrast Media
- 11:10 Imaging Procedures Head/Neck
- 12:00 Lunch on Your Own
- 1:30 Imaging Procedures Chest and Thorax
- 2:20 Imaging Procedures Abdomen and Pelvis
- 3:10 Coffee Break
- 3:20 Imaging Procedures MSK
- 4:10 Preparing for the CT Registry Exam
- 5:00 End of Day



### Wednesday 10/19 (8.0 hours)

- 7:45 Registration Desk Opens - Coffee, Tea & Pastries
- 8:15 Announcements - Matt Wilson
- 8:30 CT Dose: How it is measured and what can we do to reduce dose.
- 9:20 CT Contrast: When, Where, Why and How. Part I
- 10:10 Coffee Break
- 10:20 CT Contrast: When, Where, Why and How. Part II
- 11:10 Pulmonary Embolism: CT Practice Essentials
- 12:00 Lunch on Your Own
- 1:30 CT Brain: Anatomy and Stroke Protocol Essentials
- 2:20 Image Quality: Understanding and Manipulating Parameters
- 3:10 Coffee Break
- 3:20 CT Trauma Part I
- 4:10 CT Trauma Part II
- 5:00 End of Day



**On-Demand  
 Enduring Education  
 Available at  
[www.Advancedcme.com](http://www.Advancedcme.com)  
[www.Nwforums.com](http://www.Nwforums.com)**



IMAGING FORUMS, INC.

## Cancellation Policy

All cancellation requests must be in writing.

- 1) Cancellations received on or through 10/01/16 will receive a full registration refund. Those received after 10/01/16 through 10/07/16 will be refunded the registration fee less a 25% service charge.
- 2) No credit or refunds are available on or after 10/08/16.  
**No exceptions will be made.**
- 3) In the event a national emergency, such as a nationwide airline shutdown, makes it impossible to conduct the meeting. Each paid registrant will receive a credit voucher to attend a future meeting.

## Registration Form (please print) This form may be copied

Online Registration is available at [www.nwforums.com](http://www.nwforums.com)

Note — Registration is accepted when payment is received.  
 Confirmation will then be emailed.

Name (print) \_\_\_\_\_

**NOTE : Email address is required for confirmation purposes**

Email Address \_\_\_\_\_

Facility \_\_\_\_\_

The address below is            Facility            home            (Circle One)

Street \_\_\_\_\_

City \_\_\_\_\_ State \_\_\_\_\_ Zip code \_\_\_\_\_

Day Phone (\_\_\_\_\_) \_\_\_\_\_ work            home (Circle One)

Manufacturer of your imaging equipment \_\_\_\_\_

Payment enclosed or amount charged to credit card. \$ \_\_\_\_\_

Charge to:  VISA     MasterCard     American Express     Discover

Card Number \_\_\_\_\_ Exp. Date \_\_\_\_\_

3 Digit Credit Card Security Code (found on back of card) \_\_\_\_\_

Name on Card (print) \_\_\_\_\_

Card holder Signature (required) \_\_\_\_\_

Checks payable / send registration form to:

CT - 16



**Northwest Imaging Forums, Inc.**  
 P.O. Box 25909  
 Eugene, Oregon 97402

Please contact us for information, questions, or to register:

Phone: (888) 683-4930    Toll Free 9am - 5pm M-F Eastern Time  
 (541) 683-4930    Direct 9am - 5pm M-F Eastern Time

Fax: (541) 683-8499    24 hours a day

E-mail: [registration@nwforums.com](mailto:registration@nwforums.com)    Web site: [nwforums.com](http://nwforums.com)

(faculty, topics & format are subject to change)